

The slide features decorative geometric patterns in the corners. The top-left and bottom-left corners contain clusters of gray and maroon triangles and squares. The top-right corner has a large, complex geometric shape made of gray and maroon polygons. The background is white with faint, light gray diagonal lines running from the top-left towards the bottom-right.

valuecare
synergize. catalyze. actualize.

ValueCare is an Independent Consultant based out of India, offering a full spectrum of 360° Advisory Services in IT / ICT, Business, Finance, Infrastructure, and CSR, that provide affordable, efficient and end-to-end solutions for complex business challenges faced today with transformative, out-of-the-box, strategic, design thinking. Our journey began in 2010 as an Independent Software Vendor, System Integrator, Value Added Reseller and Vendor Agnostic Aggregator in Enterprise IT / ICT with focus on MSMEs. With our Vision:2020, we are foraying into emerging trends, disruptive technology, convergence & knowledge augmentation as an internal agile startup, 360° across varied industry domains & micro-verticals. As we reinvent ourselves, we expand our services beyond Consulting - into Governance, Project Management, and Service Delivery, leveraging our team of Innovators and Subject Matter Experts.

synergize. catalyze. actualize.

ValueCare Corporate Presentation

Kolkata | Mumbai | Delhi NCR | Bengaluru

THE PARADIGM



MISSION

We endeavor to provide end-to-end technology solutions with honesty and integrity, on time and within budget, backed by efficient customer support and service.



VISION

We envision to become the best name in Information Technology, providing unique, innovative, cost-effective, customer-centric solutions along with efficient customer support and service to achieve the highest level of customer satisfaction and organizational growth.



TEAM

Team ValueCare comprises a group of committed individuals who share a common passion of achieving professional excellence by realizing company objectives and goals. Creative innovation is encouraged within the traditional framework of cooperative team-spirit.

KEY DIFFERENTIATORS

BASIS

- The needs of every business are unique
- Cost-effectiveness and price are key factors
- Total Cost of Ownership is of prime consideration
- Returns on Investment is the bottom-line

PEOPLE

- Rich project execution experience
- Strong Project Management capabilities
- Strong domain knowledge - certified resources

PROCESS

- Process Oriented, Quality focused organization
- Expertise in different development models
- Matured global delivery processes
- Strong Business Continuity Plan & adequate Disaster Recovery

TECHNOLOGY

- Expertise in a wide range of technology platforms
- A certified pool of qualified and best in class subject matter experts

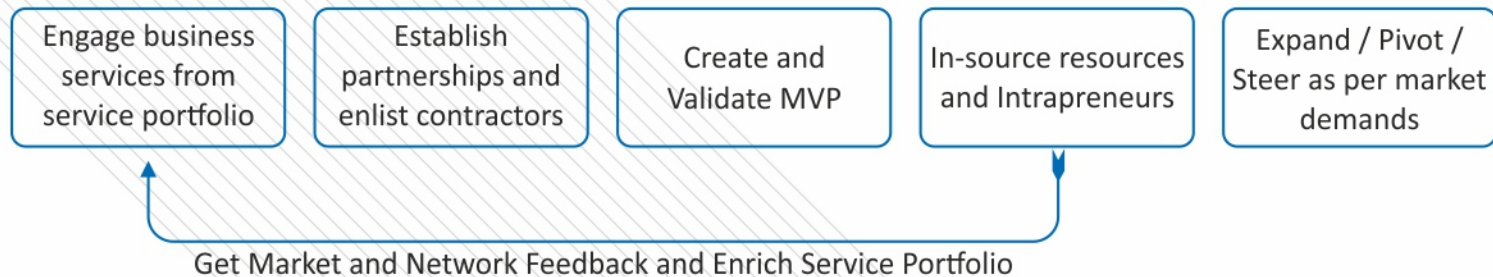
BUSINESS METHODOLOGY

- Lean startup with critical resources – Human and Infrastructure
- Create strong OEM and individual partnerships and affiliations
- Engage business services, from the portfolio, in an agile manner
- Validate MVP with delivery to pilot customers and collect feedback
- Establish SBU - Bespoke and extend the services in Entrepreneurial model
- An SBU is derived from one or more services and contributes to the overall portfolio

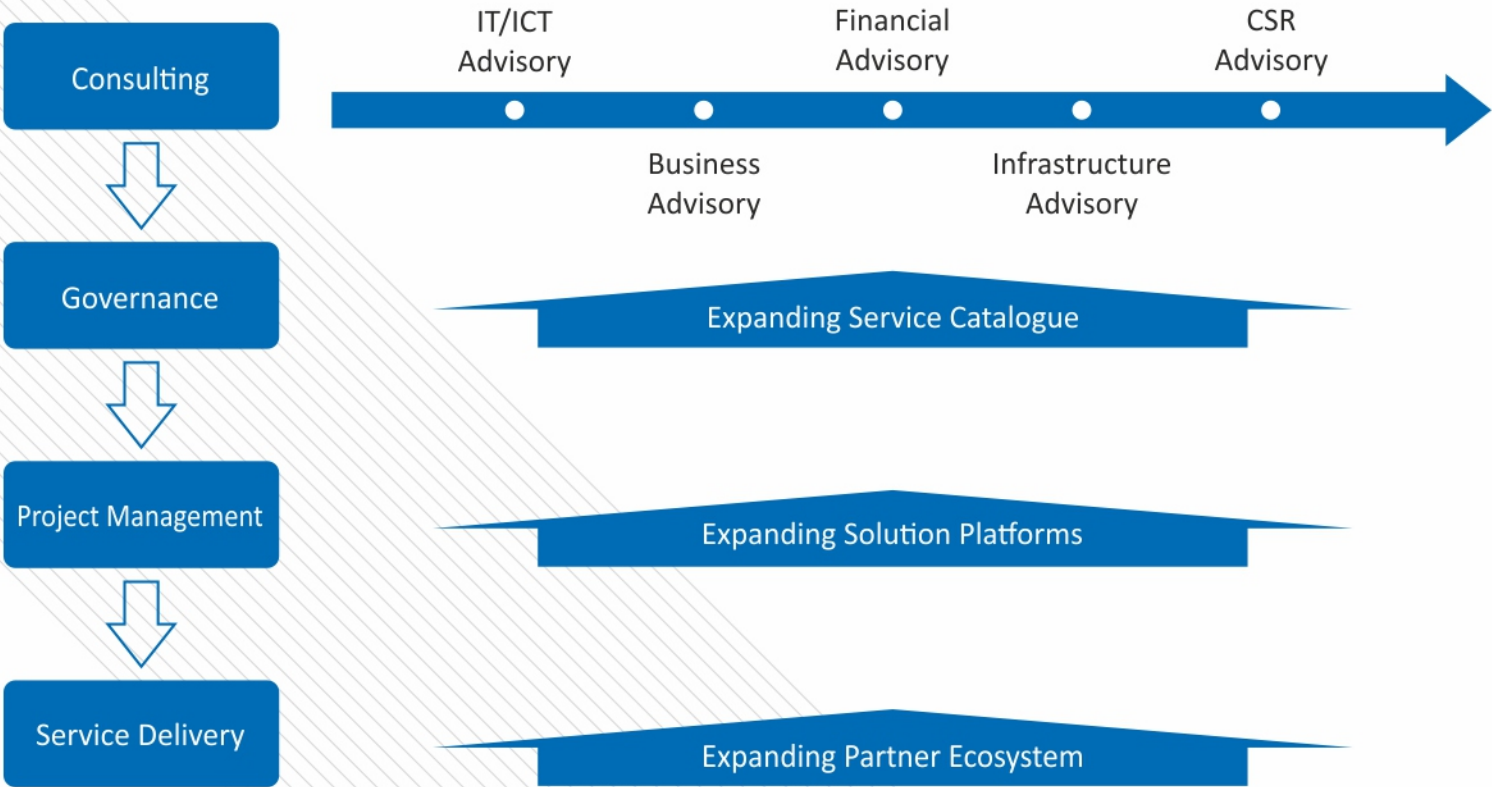
Sustain and grow with:

- Investor returns ■ Global reach
- Organic growth ■ Value to ecosystem

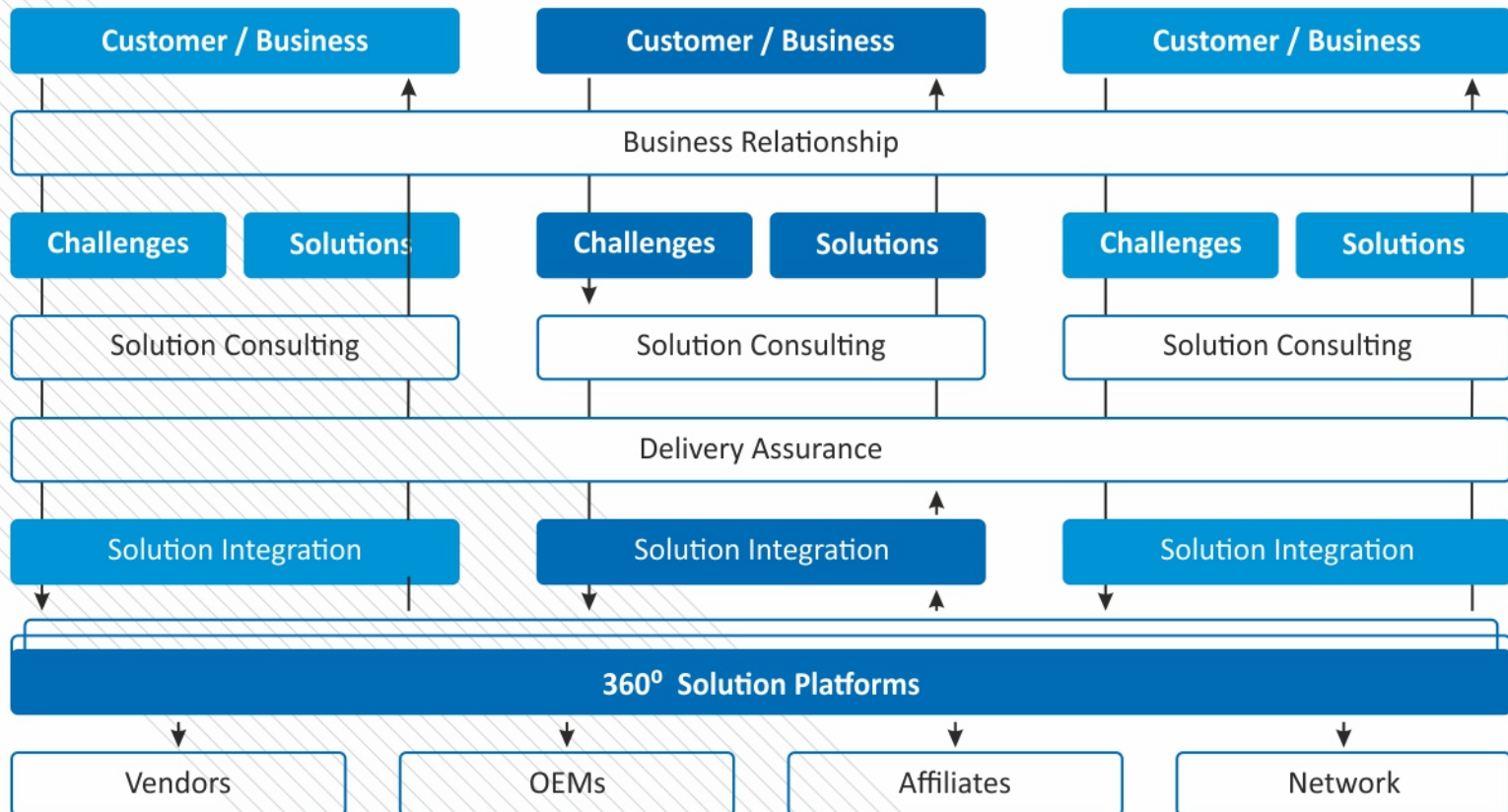
BUSINESS METHODOLOGY

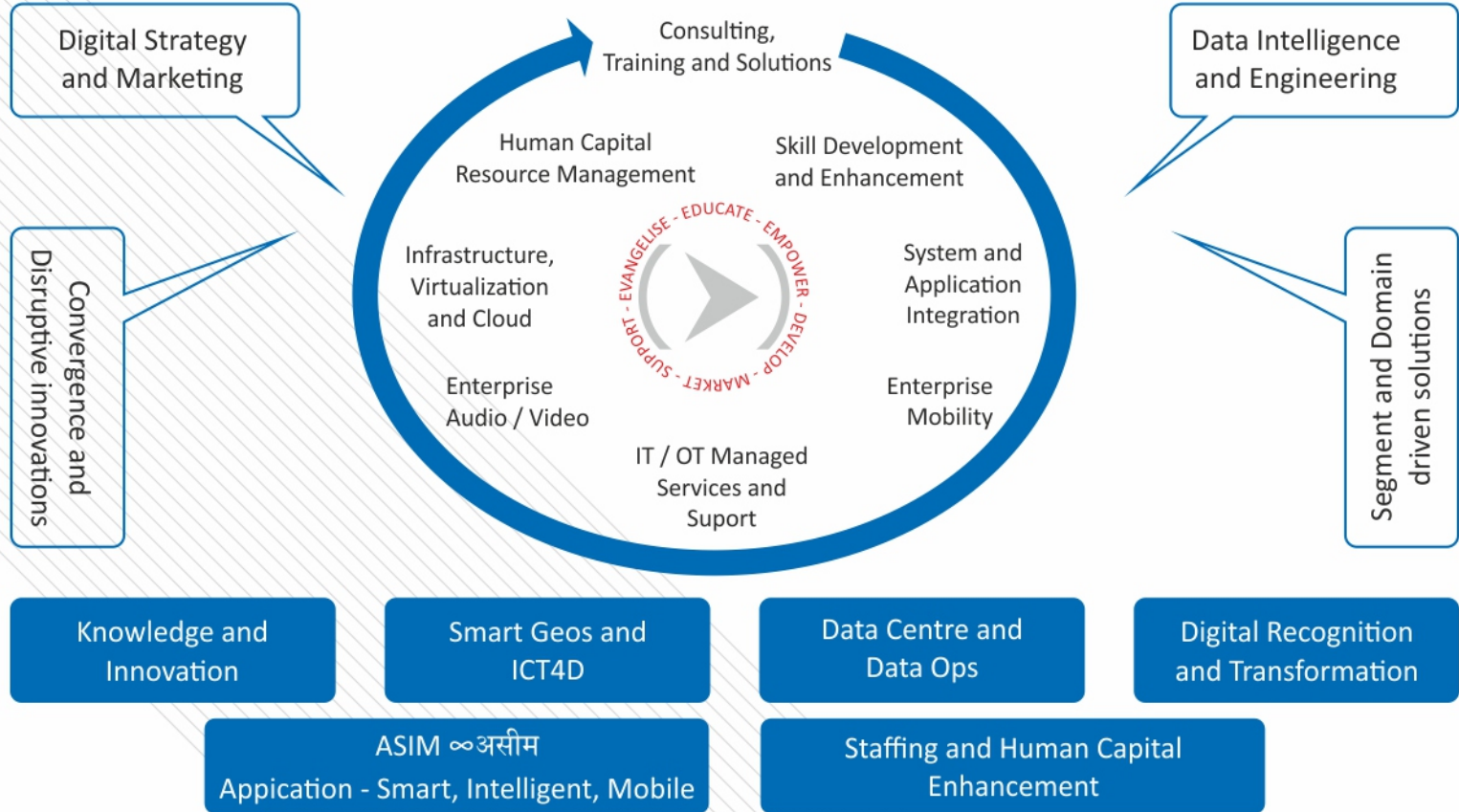


360° GROWTH MODEL



ECOSYSTEM AND SOLUTION PLATFORMS





CONSULTING, TRAINING AND SOLUTIONS



Training and Skill Development



Educational Solutions



Tools and Automation



IT Strategy and Management Consulting

- End-to-end knowledge solutions in IT and ICT
- Encompass Technology, Frameworks and Processes
- Training, both Product based and Product agnostic
- Custom Certifications and Examination solutions
- Tools and automation design and implementation
- Consulting on Process, Frameworks and Standards
- Solutions in individual and organizational certifications
- Design and development of custom programs and content
- Leveraging leading OEM Partners and Subject Matter Experts
- Engagements focused to enhance customer organizations to provide better services to their clients

HUMAN CAPITAL RESOURCE MANAGEMENT



Sourcing



Staff Augmentation



**Professional Development
and Assessment**

- Sourcing, Upskilling, Deputation, Development and Assessment
- Higher resources retention and conversion with lower HR risk
- Better overall utilization and minimized bench
- Greater and faster access to talent, outside of traditional sources
- Professional development of resources aligned to the required roles and competencies
- Competency assessment – Technical, Soft Skills and Psychometric
- Technology enabled process including Analytics
- Focus on Productivity, Unlearning & relearning, Cultural and Social Compatibility
- Social and Referral Recruiting, Traditional & Social Screening

SKILL DEVELOPMENT AND ENHANCEMENT



Institutional



Institutional

- Employability enhancement by competency building through 'Consulting, Training and Solutions'
- Catering to both Institutional and Industrial needs - IT and beyond
- Affiliations with both Government and Non-Government Skill Development Initiatives
- Pre-enrolment skill assessment, aptitude test and career guidance towards mapping to the best opportunity fitment
- Technical, Functional and Behavioral training including Soft-Skills, and Hands-On expertise building
- Internal absorption as well as Placement opportunities networked through 'Human Capital Resource Management'
- Mentoring and Assessment by Subject Matter Experts - Industry and Institution

INFRASTRUCTURE, VIRTUALISATION AND CLOUD



**Data Centre,
Storage and Appliances**



**Internet Service
Provider**



Cloud Computing



Virtualization

- End-to-end knowledge solutions in IT and ICT
- Encompass Technology, Frameworks and Processes
- Training, both Product based and Product agnostic
- Custom Certifications and Examination solutions
- Tools & automation design and implementation
- Consulting on Process, Frameworks and Standards
- Solutions in individual and organizational certifications
- Design & development of custom programs and content
- Leveraging leading OEM Partners and Subject Matter Experts
- Engagements focused to enhance customer organizations to provide better services to their clients

SYSTEM AND APPLICATION INTEGRATION



System Integration and Reselling



Web Development and Solutions



Enterprise Application Deployment

- Design, Deployment, Migration, Upgrades, Integration
- Value Added Reselling - Devices, Applications and Appliances
- Adoption of Cloud-based Integration solutions, Mobile and Real-time Integration
- Full scale deployment, tactical upgrades and custom integrations
- Technology choices - open source and commercial
- Integrated and individual components under Enterprise Application Suite and ERP
- Speciality Web applications including Real-Time and Progressive Web Apps
- Focus on Business Process Integration and Real-time API Driven Application Integration
- Adoption of BYOD Policy, IoT driven solutions

ENTERPRISE AUDIO VIDEO



Video and Audio Platform Services



KVM - DC



Optical Solutions

- Secured Cloud based low bandwidth Video Platform
- Marketing, Communications, Events, Customer engagement
- Optical solution catering to Document management
- Video Streaming, Conference and storage with Last mile assurance
- Design, implementation, Integration including API / SDK
- Smart and Virtual Classroom with Surveillance and Proctoring
- Mobile related solutions including M2M Video
- Technologies like Mobification, IoT, M2M, Video Streaming and Management, AI, SERP, Cloud, GPS and Geo tags, Low bandwidth
- Audio Video Solution including AV Devices and Device Network
- KVM solution for Data Center including Cable, Desktop, LCD KVM
- Audio and Video Devices, Software and other accessories
- In tandem with 'Digital Strategy and Marketing'

ENTERPRISE MOBILITY



Mobility Solution



**Diagnostics and
Resolution**

- Unified Endpoint Management (UEM) encompassing and superseding EMM & MDM practices
- UEM Solutions for SME, Corporate and Institutions
- Catering to tech advancements - 'Device proximity', 'NFC' (Near-Field Communication), 'Gesture', 'Augmented Reality', 'Speech' and 'AI'
- BYOD (Bring Your Own Device) and Mobile to Laptop/ Desktop Integration solutions
- Improvised Mobile Security and Privacy
- Low bandwidth based solutions for rural market penetrations
- Mobility Device Diagnostics and Resolution

IT / OT MANAGED SERVICES AND SUPPORT



Remote Infrastructure



**Export of Software
and Hardware**



Managed Services



Technical Support

- IT and OT Convergence – Extended Scope Beyond the Traditional
- Managed Services and Tools configuration / implementation
- Servers, Desktops, Applications; Mobile, Smart devices, Appliances; Network, Firewall
- Diagnostics, Backup and Recovery, Upgrades and implementing Security
- State-of-the-art Remote Device Management including virtual agents and AR/VR support
- Affordable Cloud enabled Self Service and Catalogue based services
- Securing and maintaining privacy and security of customer data and information
- Application of AI and Predictive Analytics
- Engagement with STPI and eHTPI

DIGITAL STRATEGY AND MARKETING



Social Media Optimization and Marketing



Search Engine Optimization and Marketing



Branding and ORM



Analytics Driven Customer Engagement

- Designing and Enabling the Digital Strategy of an organization, through Social, Web, Video, Event and Platform Services
- Effective Marketing and Engagement - SEO, SEM, SMO, SMM, Behavioral, Event and Community programs
- ORM and Branding - Influencer Marketing, Analytics, Authenticity, Social listening and Reviews, VoC, Campaigns
- Data & Information Visualizations like Infographics, Story Doing
- Futuristic Domain solutions with advanced technologies
- Social media platforms including Facebook, Instagram, Twitter, LinkedIn, YouTube, Pinterest
- Engagement through AR/VR, Chatbots, Interactive content
- Engagement with Online Sales, Marketing and Support tools
- In tandem with 'Enterprise Audio Video Solutions'

SEGMENT AND DOMAIN SOLUTIONS



**Micro Enterprise
Solutions**



SME Solutions



**Domain Technology
Solutions**

- Custom solutions based on organization segment – target customer, size and investment capacity
- Domain specific technology solutions not limited to Health-Tech, Fin-Tech and Edu-Tech
- Solution packs for Startup and existing Micro Enterprises
- Cost optimized IT / ICT Solutions across SMEs
- Focus on Open Source based and Cloud based product based solutions
- Bring in affordable high-end and business solutions across industries critical for business growth
- This is a value proposition cutting across most of the other services

CONVERGENCE AND DISRUPTIONS



**Technological
Convergence**



**Unified
Communication**



**Digitization and
Information Processing**



**Smart
Technologies**

- Emerging tech trends towards collaborative value
- Encompass appliances, applications and methodologies
- IT enrichment across various IT / Non-IT domains and industries to provide them competitive advantage
- Various tools and techniques for effective communication and information exchange
- Information transformations across various platform and media - text, voice and image
- Solutions facilitating smart ecosystem – devices, homes, offices and cities
- Engaging Industry experts across varied domains and technologies
- This is a value proposition and cuts across multiple portfolios

DATA INTELLIGENCE AND ENGINEERING



Cyber Security



**Privacy and
Digital Footprint**



**Data Mining
and Analytics**



**Data & File
Recovery**

- OpenSource and Licensed DataBase Administration, Migration and Management Solutions for Structured and Unstructured Data
- Data Intelligence and Forensics through Data Audit, Mining, Analytics, Recovery and Sanitisation
- Data Privacy and Digital Footprint Monitoring and Management including Compliance to newer regulations like GDPR
- Disaster Recovery, Business Continuity, Cyber Risk Assessment and Mitigation, Cyber Security Assurance and Control
- Data Quality Management, Data Governance, Embedded Business Intelligence
- AI - Artificial Intelligence / ML - Machine Learning / DL - Deep Learning / IVA - Intelligent Virtual Assistant / RPA - Robotic Process Automation

SMART GEOS AND ICT 4D

Smart Cities, Villages, Offices - eGovernance - Sustainability - Connected Devices - OneWorld



- Smart Geos, including Smart Cities and Smart Villages, encompassing interlinking of urban and rural geographies with resources, homes, offices, citizens, Government and other relevant bodies
- Principles of Information and communication technologies for development (ICT4D) used towards Socio-economic development
- E-governance frameworks used for delivering services, information exchange and integration of various systems and services
- Focus on Sustainability, Intelligence, Cognition in the Digital and Virtual era
- Aligned with Smart Cities Mission, a Govt. of India initiative and The 17 Sustainable Development Goals set by the United Nations

DATA CENTER AND DATA OPERATIONS

Data Centre - Design - Management - Data Ops - Compliance - Intelligent Security - Optimized

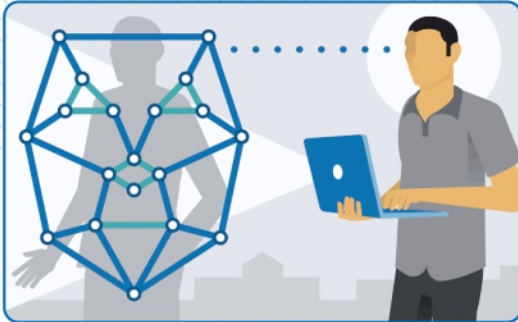
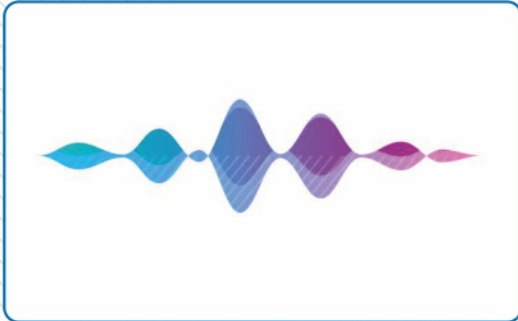


- Design of facility, engineering and technology infrastructure
- DCIM for Centralized Monitoring, Management and Capacity Planning
- Business Continuity, Service Continuity and Disaster Recovery Services
- DataOps enabled solutions, including DaaS, to enforce strict data access and governance centralized across multiple Data Centres
- Regulatory compliance to set and enforce automated data controls across their clouds, core data centers and edge locations
- AI components for prompt Intrusion Detections and early detection of faults - proactive and responsive
- Investment optimization through White box servers, Micro DCs, hybrid clouds, Dynamic Infrastructure and technologies like Edge, SD-WAN



DIGITAL RECOGNITION AND TRANSFORMATION

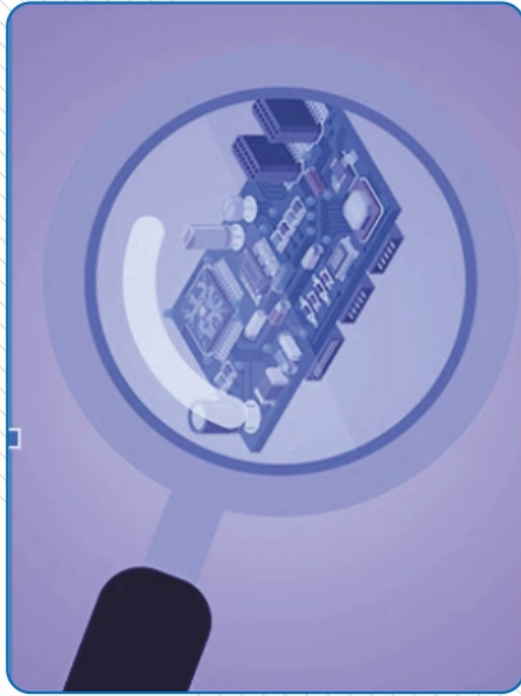
Image, Text, Voice - Recognition, Analysis, Intelligence - Transform and Retrieve - Tag and Preserve



- Recognition, Analysis and Transformation of data across multiple forms
- Text, Scene Text, Image, Voice / Speech as conversion forms of data
- Analysis and Intelligence - Keyword and Speaker recognition / Diarization
- AI Capabilities - Deep Learning and Machine Learning
- Digital Preservation and Replication of documents and artefacts
- API's to add transcription facilities across apps and applications
- Real time and Multi Language support
- Integrated Solutions
 - OCR, STT, TTS - Optical Character Recognition , Speech to Text, Text to Speech,
 - NLP / NLU - Natural Language Processing / Understanding

APPLIANCES - SMART, INTELLIGENT, MOBILE ASIM ∞ असीम

Micro / Nano - Proprietary Software, Firmware - Custom, Adaptable - Premium, Affordable, Socio-Eco



- Appliances- Smart, Intelligent, Mobile -ASIM, implies their Endless ∞असीम usage in terms of flexibility, adaptability, affordability
- “Pocket Friendly” - Small form factor (Micro / Nano) and Affordable
- Multiple types with varied common interface, mobility, custom and adaptable programming catering to diverse functions
- Meeting expanding demands of both “Cutting edge premium appliances” and “Sustainable appliances - with distinct socio-economic benefits”.
- For Mobile & Field users in domains like Financial, HealthCare, Transport
- Being aligned with government and non-government initiatives like eHTPI from STPI for incubation, establishment and expansion of the market demand
- Includes “Small Affordable Mobile Appliances” - SAMA / समा enabling affordable mobile IT Environment across geographies for MSME usage

STAFFING AND HUMAN CAPITAL ENHANCEMENT

Full Stack Enterprise Solutions - Advisory, Evaluation, UpSkilling, Project based Hiring - Short to Long Term



- Full stack of Enterprise Staffing and Human Capital Solutions for all verticals
- Modes include On-roll, Off-roll, Short to Long-term, Temporary, Permanent
- Contingent - Up-skilling and moving bench intra- and inter- organization
- Evaluation - Technical, Functional, Behavioral and Psychometrics
- Bespoke Project based Team with right mix of competencies and culture
- Lower OpEx - Flexible team size through Lean / Agile Hiring
- Augment internal team - Experts and Professionals outside your core area
- Advisory on upskilling and team size optimization, Offshoring, Automation
- Team performance enhancements with collaborative and knowledge tools
- Methodology: Customer Requirement - Candidates' Profiling - Matching Requirement - Training and Upskilling - Selection and Monitoring



CLIENTELE

Advanced
Technology, Financial Accounting, Compliance

somnet
imaging is everything

INFOWAYTM
Think Innovator? Think Infoway



DUTCH

R B G
ROYAL BENEFITS GROUP

JEEVAN
TECHNOLOGIES

BBJ
CALCUTTA



JOE DUEÑAS
LIVE, WORK, AND PLAY IN SOUTH COAST



SKICORP
inspired by next

oZolve

Saraswati Online.Com India Ltd.TM
Nurturing Talent Successfully

IndianTAG.com

Satyam
Enterprises

XE
EMPOWERING THE WORLD

CLIENTELE



ERMIN SYSTEMS



TPSL



COMPLETE
CONSTRUCTION
SOLUTIONS

Aventedge



BUSINESS PARTNERS AND STRATEGIC ALLIANCES



CONNECT WITH US



Kolkata :

India (E)
UPTC 0212 Upohar Town Centre
2052 Chak Garia
Kolkata 700094

Mumbai:

India (W)
91SpringBoard Business Hub
B Wing, 5th Floor
Akruti Trade Centre
MIDC Andheri (E)
Mumbai 400093

Delhi NCR :

India (N)
91Springboard Business Hub
A-130, A Block, Sector 63
Noida 201301

Bengaluru:

India (S)
91SpringBoard Business Hub
4th Floor, Salarpuria Towers
Koramangala, 7th Block
22 Hosur Road
Bengaluru 560095

eMail: info@valuecareinc.com

Website: www.valuecareinc.com



Superior IT
Solutions



IT Service
Excellence



Clear Business
Outcome



Exceed Customer
Expectations